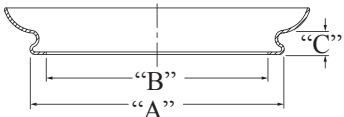
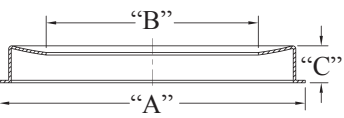
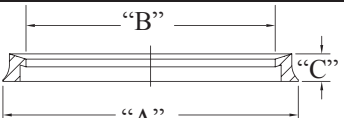
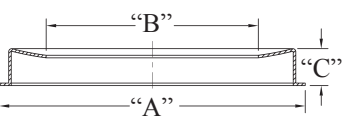
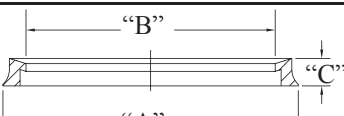
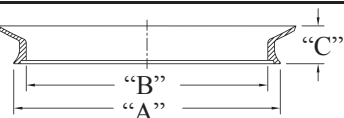
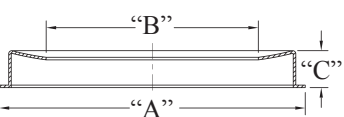


DESCRIPTION

Norton Industries neck fitters are designed to be used with commercial and residential spheres in post top and pendant applications. See chart for materials and colors available.



| STYLE | ITEM NO. | A (NECK OD) | B (NECK ID) | C (HEIGHT) | MATERIAL | COLOR |
|---|-----------------|----------------|----------------|---------------|---------------|--------|
|  | 98003-A | 3.10" | 2.88" | .50" | Aluminum | Silver |
| | 98004-A | 3.89" | 3.38" | .44" | Aluminum | Silver |
|  | 98005-A | 5.00" | 3.34" | .62" | Aluminum | Silver |
|  | 98006-P | 6.00" | 4.73" | .75" | Polycarbonate | Black |
|  | 98007-A | 7.00" | 5.69" | .63" | Aluminum | Silver |
| | 98007.5-A | 7.50" | 6.00" | .81" | Aluminum | Silver |
|  | 98008-P | 8.00" | 6.85" | .75" | Polycarbonate | Black |
|  | 98008-PSPEC-WHT | 8.00" | 7.19" | 1.14" | Polycarbonate | White |
| | 98008-PSPEC-BLK | 8.00" | 7.19" | 1.14" | Polycarbonate | Black |
|  | 98009-A | 9.00" | 7.50" | .62" | Aluminum | Silver |
| | 98010-A | 10.00" | 8.25" | .69" | Aluminum | Silver |


Split Neck Fitters

DESCRIPTION

Norton Industries split fitters are designed for commercial and residential applications for use with street lamps with 8F and 9F necks. The Split Fitter gives additional reinforcement to the structural integrity of the neck when securing to post tops.

Split Neck Fitters are available in aluminum.



| STYLE | ITEM NO. | DESCRIPTION | MATERIAL | COLOR |
|---|--------------|---------------|----------|--------|
|  | 98-SPLIT-8.5 | Fits 8F Necks | Aluminum | Silver |
| | 98-SPLIT-9 | Fits 9F Necks | Aluminum | Silver |

Dimensions are nominal

Aluminum Heat Shields

DESCRIPTION

Norton Industries **Externally Mounted Aluminum Heat Shields** are designed for use with commercial and residential spheres.

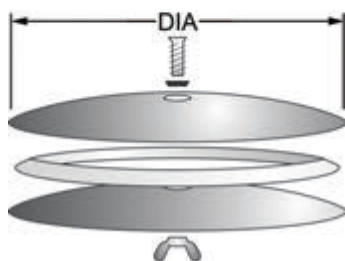
Norton Industries **Internally Mounted Heat Shields** are designed for use with commercial and residential spheres and street lamps in post top applications.

MATERIALS

Norton Industries **External Heat Shields** are available aluminum painted white or black, **Internal Heat shields** are available in raw aluminum.

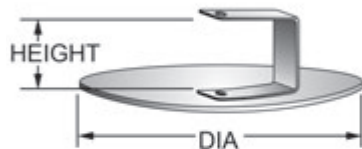


EXTERNALLY MOUNTED



| ITEM NO. | FITS GLOBE SIZE | DISK O.D | MATERIAL | COLOR |
|-----------|--------------------|----------|----------|-------|
| 96005-BLK | 10", 12", 14", 16" | 5.00" | Aluminum | Black |
| 96005-WHT | 10", 12", 14", 16" | 5.00" | Aluminum | White |
| 96007-BLK | 18", 20", 22", 24" | 7.50" | Aluminum | Black |
| 96007-WHT | 18", 20", 22", 24" | 7.50" | Aluminum | White |

INTERNALLY MOUNTED



| ITEM NO. | FITS GLOBE SIZE | DISK O.D | BRACKET HEIGHT | MATERIAL | COLOR |
|----------|--------------------|----------|----------------|----------|--------|
| 96104-A | 10", 12", 14", 16" | 4.00" | 4.25" | Aluminum | Silver |
| 96106-A | 18", 20", 22" | 6.00" | 4.25" | Aluminum | Silver |
| 96108-A | STREET LAMPS | 8.00" | 9.50" | Aluminum | Silver |

Aluminum Top Caps

DESCRIPTION

Norton Industries aluminum top caps are designed for commercial and residential applications for use with 12" and 15" cubes.

MATERIALS

Norton Industries **Top Caps** are available in aluminum painted black or white.



| ITEM NO. | DISK I.D. | HEIGHT | MATERIAL | COLOR |
|-----------|-----------|--------|----------|-------|
| 97000-BLK | 6.50" | .56" | Aluminum | Black |
| 97000-WHT | 6.50" | .56" | Aluminum | White |

Dimensions are nominal

Post Top Fitters

DESCRIPTION

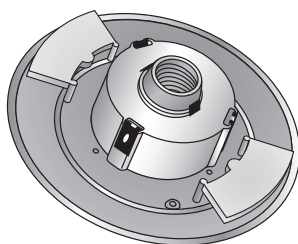
Norton Industries post top fitters are designed for use with commercial and residential post top applications.

MATERIALS

- **Polycarbonate** - UV stabilized with continuous operating temperature of 100°C to 125°C and high impact resistance down to -40°C.

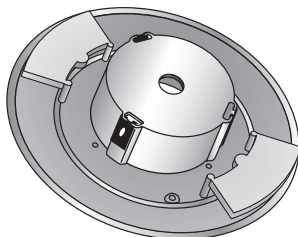


5.25" OPENING FITTER WITH SOCKET



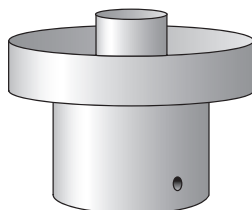
| ITEM NO. | DESCRIPTION | MATERIAL | COLOR |
|-------------|---|---------------|-------|
| 99-S071-BLK | • Phenolic Incandescent Socket • Fits Standard 3" Post | Polycarbonate | Black |
| 99-S071-WHT | • Accepts Most Enclosures with a 5.25" Neckless Opening | Polycarbonate | White |

5.25" OPENING FITTER NO SOCKET



| ITEM NO. | DESCRIPTION | MATERIAL | COLOR |
|-------------|--|---------------|-------|
| 99-S072-BLK | • 7/16" Dia. Center Hole for 1/8" IPS • Fits Standard 3" Post | Polycarbonate | Black |
| 99-S072-WHT | • Accepts Most Enclosures with a 5.25" Neckless Opening | Polycarbonate | White |

4" TWIST LOCK FITTER WITH SOCKET



| ITEM NO. | DESCRIPTION | MATERIAL | COLOR |
|-------------|---|---------------|-------|
| 99-S048-BLK | • Phenolic Incandescent Socket • Fits Standard 3" Post | Polycarbonate | Black |
| 99-S048-WHT | • Accepts Most Enclosures with a 4" Twist Lock Neck | Polycarbonate | White |

Dimensions are nominal

Series 98-ATOP-WASH

DESCRIPTION

Norton Industries 98-ATOP-WASH is designed for commercial and residential post top applications. It can be used with the 60 Series, 62 Series and 66 Series Street Lamps.

MATERIALS

Norton Industries Series **98-ATOP-WASH** are available in aluminum.

| ITEM NO. | HEIGHT | ID (BOTTOM) | MATERIAL | COLOR |
|--------------|--------|----------------|----------|--------|
| 98-ATOP-WASH | 9.13" | 11.66" | Aluminum | Silver |



Series 98-ATOP-WASH-66

DESCRIPTION

Norton Industries 98-ATOP-WASH-66 is designed for commercial and residential post top applications. It can be used with the 66 Series Street Lamps.

MATERIALS

Norton Industries Series **98-ATOP-WASH-66** are available in aluminum.

| ITEM NO. | HEIGHT | ID (BOTTOM) | MATERIAL | COLOR |
|-----------------|--------|----------------|----------|--------|
| 98-ATOP-WASH-66 | 13.18" | 16.56" | Aluminum | Silver |



88230 Top

DESCRIPTION

Norton Industries textured streetlamp tops are designed for commercial and residential post top application.

MATERIALS - Impact modified and UV resistant with continuous operating te

- **Acrylic** - Impact modified and UV resistant with continuous operating temperature up to 90°C and transmittance of 92% (application dependent). Acrylic streetlamp tops are available in clear.

| ITEM NO. | HEIGHT | ID (BOTTOM) | MATERIAL | COLOR |
|----------|--------|----------------|----------|-------|
| 88230-CL | 13.22" | 15.52" | Acrylic | Clear |



Series 99 Finial

DESCRIPTION

Crown Plastics finials are designed for commercial and residential post top and pendant applications. Finials can be used with Street Lamp Globes.

MATERIALS

- **Polycarbonate** - UV stabilized with continuous operating temperature of 100°C to 125°C and high impact resistance down to -40°C. Polycarbonate finials are available in black.

| ITEM NO. | HEIGHT | OD (BOTTOM) | MATERIAL | COLOR |
|---------------|--------|----------------|---------------|-------|
| 99-FINIAL-BLK | 5.00" | 3.25" | Polycarbonate | Black |



Dimensions are nominal

Series 89103 Chimney

DESCRIPTION

Norton Industries smooth chimney is designed to be used with commercial and residential LED post top applications. Our 89103 Chimney is for decorative purposes only.

MATERIALS

- **Polyethylene** - Impact resistant and offers an affordable cost solution for light housings. Polyethylene chimnies are available in white.

| ITEM NO. | HEIGHT | OD (BOTTOM) | OD (TOP) | MATERIAL | COLOR |
|----------|--------|----------------|-------------|--------------|-------|
| 89103-WH | 8.50" | 2.90" | 2.00" | Polyethylene | White |



Post Sleeve

DESCRIPTION

Norton Industries decorative fluted post sleeves fit standard 3" posts and are available in 10' lengths. Post sleeves are designed for commercial and residential post applications

MATERIALS

- **Polyethylene** - Impact resistant and offers an affordable cost solution for post housings. Polyethylene post sleeves are available in black.

| ITEM NO. | LENGTH | MATERIAL | COLOR |
|-----------|--------|--------------|-------|
| 89010-BLK | 10.00' | Polyethylene | Black |



Post Base Cover

DESCRIPTION

Norton Industries post base covers fit standard 3" post.

MATERIALS

- **Polyethylene** - Impact resistant and offers an affordable cost solution for light housings. Polyethylene base covers are available in black.

| ITEM NO. | HEIGHT | OD (BOTTOM) | OD (TOP) | MATERIAL | COLOR |
|-----------|--------|----------------|-------------|--------------|-------|
| 89000-BLK | 24.00" | 13.00" | 5.50" | Polyethylene | Black |



Dimensions are nominal

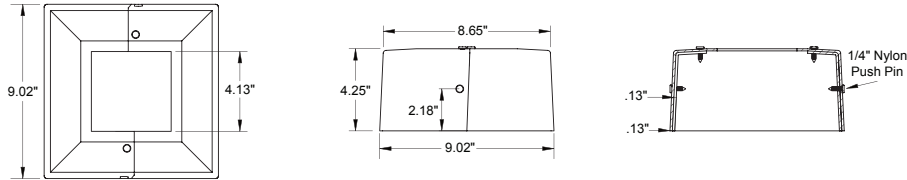
4" Post Base Cover

DESCRIPTION

Norton Industries post base covers fit standard 4" square posts.

MATERIALS

- **Polycarbonate** - UV stabilized with high impact resistance down to -40°C. Polycarbonate post base covers are available in black, white or bronze. Call for custom colors.



| ITEM NO. | COLOR |
|----------|--------|
| 84211-BK | Black |
| 84211-WH | White |
| 84211-BZ | Bronze |



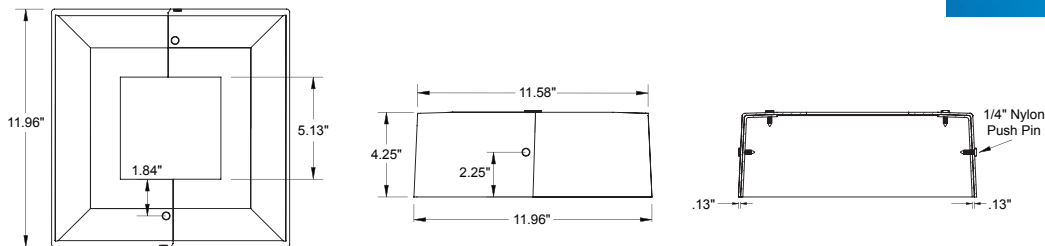
5" Post Base Cover

DESCRIPTION

Norton Industries post base covers fit standard 5" square posts.

MATERIALS

- **Polycarbonate** - UV stabilized with high impact resistance down to -40°C. Polycarbonate post base covers are available in black, white or bronze. Call for custom colors.



| ITEM NO. | COLOR |
|----------|--------|
| 84212-BK | Black |
| 84212-WH | White |
| 84212-BZ | Bronze |



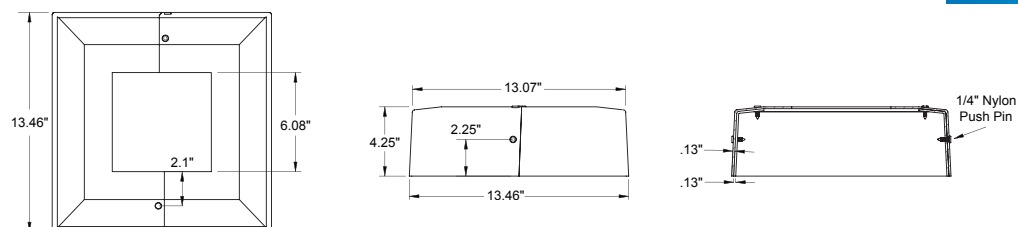
6" Post Base Cover

DESCRIPTION

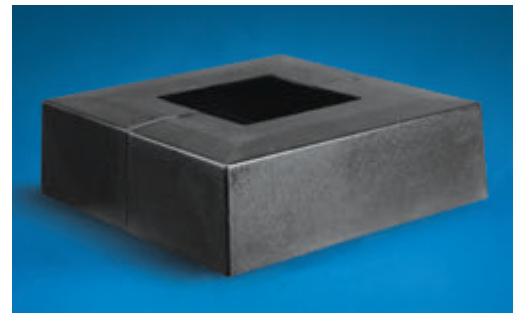
Norton Industries post base covers fit standard 6" square posts.

MATERIALS

- **Polycarbonate** - UV stabilized with high impact resistance down to -40°C. Polycarbonate post base covers are available in black, white or bronze. Call for custom colors.



| ITEM NO. | COLOR |
|----------|--------|
| 84213-BK | Black |
| 84213-WH | White |
| 84213-BZ | Bronze |

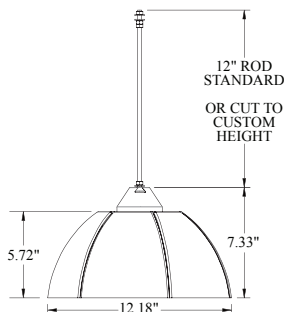


Dimensions are nominal

Top Mount Energy Efficient Reflector

DESCRIPTION

Norton Industries Top Mounted Energy Efficient Reflectors are designed for commercial and residential HID post top applications. EER increases down lumens, decrease uplight levels and allows for lower wattage lamps as well as decreasing carbon footprint. It is easy to install and has self collapsing design. Energy Efficient Reflector requires a minimum 7" inside diameter opening.



MATERIALS

Norton Industries Series Energy Efficient Reflectors are made with high heat resin. For use with 175W maximum (237 degrees F/ 114 degrees C)

| ITEM NO. | DESCRIPTION |
|-----------------|-------------|
| 99-DSR12-TM-ASS | Top mount |



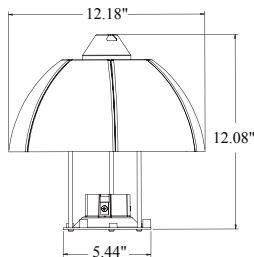
Bottom Mount Energy Efficient Reflector

DESCRIPTION

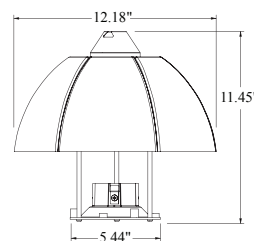
Norton Industries Medium and Mogul base Mounted Energy Efficient Reflectors are designed for commercial and residential HID post top applications. EER increases down lumens, decrease uplight levels and allows for lower wattage lamps as well as decreasing carbon footprint. It is easy to install and has self collapsing design. Energy Efficient Reflector requires a minimum 7" inside diameter opening.

MATERIALS

Norton Industries Series Energy Efficient Reflectors are made with high heat resin. For use with 175W maximum (237 degrees F/ 114 degrees C)



| ITEM NO. | DESCRIPTION |
|-------------------|-------------------------------------|
| 99-DSR12-BMOG-ASS | Bottom mount for mogul base sockets |



| ITEM NO. | DESCRIPTION |
|-------------------|--------------------------------------|
| 99-DSR12-BMED-ASS | Bottom mount for medium base sockets |

425 Optical Refractor Lite Lids

DESCRIPTION

425 Optical Refractor Lite Lids are designed for commercial and residential post top 88230ALEX street lamp assemblies with Lexalite 425 bottoms only.

MATERIALS

Lite Lids are available in aluminum perforated and non-perforated reflectors.



| ITEM NO. | DESCRIPTION | DIAMETER |
|------------|------------------------|----------|
| 99-LL15-P | Perforated Litelid | 15.15" |
| 99-LL15-NP | Non-perforated Litelid | 15.15" |

Dimensions are nominal